

第26回 観光英語検定試験

2級 筆記・リスニング試験問題

平成24年7月1日実施

1. 最初に筆記試験(試験時間は60分)、引き続きリスニング試験(試験時間は約30分)が行われます。試験監督者の指示に従ってください。
2. 問題冊子は試験監督者から開始の合図があるまで開かないでください。
3. 解答用紙(マークシート)の記入欄に、氏名・生年月日・受験番号等を記入してください。
4. 試験開始の合図後、最初に問題冊子のページ(29ページ)を確認してください。もし乱丁や落丁がある場合は、すみやかに申し出てください。
5. 解答は全て、解答用紙の該当するマーク欄を黒鉛筆で塗りつぶしてください。
 - 黒鉛筆またはシャープペンシル以外は使用できません。
 - 解答用紙には解答以外の記入をいっさいしないでください。
6. 辞書・参考書およびそれに類するものの持ち込みはすべて禁止されています。
7. 筆記用具が使用不能になった場合は、係員にすみやかに申し出てください。
8. 問題の内容に関する質問には、一切応じられません。
9. 不正行為があった場合、解答はすべて無効になりますので注意してください。

【筆記試験について】

1. 試験監督者が筆記試験の開始を告げてから、始めてください。
2. 各設問は1から50までの通し番号になっています。
3. 試験開始後の中途退出はできません。(リスニング試験が受けられなくなります。)

【リスニング試験について】

1. 各設問は51から90までの通し番号になっています。
2. リスニング中に問題冊子にメモをとってもかまいませんが、解答用紙に解答を転記する時間はありませんので、注意してください。
3. 放送が終了を告げたら、筆記用具を置いて、係員が解答用紙を回収するまで席を立たないでください。

全国語学ビジネス観光教育協会

2級筆記

1 [Part A] Read the following English statements from (1) to (5) and choose the most appropriate Japanese translation for each underlined part from among the four alternatives: a), b), c) and d). Blacken the letter of your answer on the answer sheet.

(1) Visitors can enjoy a panoramic view of the city from the observatory.

- | | |
|--------|---------|
| a) 観測所 | b) 高層ビル |
| c) 展望台 | d) 摩天楼 |

(2) Would you care for an apéritif?

- | | |
|--------|--------|
| a) 主菜 | b) 食前酒 |
| c) 食後酒 | d) 前菜 |

(3) We had dinner in the courtyard of the historic hotel.

- | | |
|----------|---------|
| a) 玄関 | b) 中庭 |
| c) バルコニー | d) ベランダ |

(4) This botanical garden was made almost two hundred years ago.

- | | |
|--------|--------|
| a) 果樹園 | b) 植物園 |
| c) 動物園 | d) バラ園 |

(5) The portage is included in this Kyushu tour.

- | | |
|--------------|--------|
| a) 通関手数料 | b) 運搬料 |
| c) ポーターへのチップ | d) 郵送料 |

[Part B] Read the following Japanese statements from (6) to (10) and choose the most appropriate English translation for each underlined part from among the four alternatives: a), b), c) and d). Blacken the letter of your answer on the answer sheet.

(6) あなたのバッグにはご自身の名前を記した荷札が付いていますか。

Is your bag _____ with your name?

- a) labeled
- b) named
- c) tagged
- d) packed

(7) 申し訳ございませんが、明日のシングルは満室です。

I'm afraid single rooms are _____ tomorrow.

- a) available
- b) filled to capacity
- c) overbooked
- d) unoccupied

(8) ロンドンの食べ放題のレストランでおいしい昼食を食べました。

We enjoyed a delicious lunch at the _____ restaurant in London.

- a) all-you-can-eat
- b) cafeteria-style
- c) casual-style
- d) Viking

(9) 車での出迎えありがとうございます。とても感謝しています。

Thanks for picking me up. I really _____ it.

- a) allocate
- b) appreciate
- c) neglect
- d) regret

(10) この蕎麦屋では、お支払いは前金をお願いします。

In this noodle shop, payment is required _____.

- a) at precisely
- b) currently
- c) in advance
- d) subsequently

2

[Part A] Read the following English dialogs from (11) to (15) and choose the most appropriate utterance to complete each dialog from among the four alternatives: a), b), c) and d). Blacken the letter of your answer on the answer sheet.

- (11) A: Good morning. Today's special is a mocha cream maple latte. It's \$3.99. That's a dollar off from the regular price. And our featured brew is a Blue Mountain blend. What can I get you?
B: Um..._____
- a) Yes. I have a reservation for two nights. My name is Tanaka.
 - b) No, thank you. I have a ticket for admission that should still be valid.
 - c) Just a regular coffee would be great. Small and black.
 - d) Something in my size if you have it. I didn't see any on the rack.
- (12) A: We were hoping to have a chance to take a hot-spring bath while we're in Japan. But my husband's business schedule is full. We don't have enough time to spend a night in a resort hotel in the country.
B: Actually, there are urban hot-spring resorts in most big cities. _____
_____ Just ask your concierge to locate one for you.
- a) You can visit for a few hours any morning or evening you are free.
 - b) Hot-spring baths are exclusively found in country resorts. Sorry.
 - c) The cuisine available is really impressive, especially at this time of year.
 - d) That's a problem if you haven't brought your equipment.
- (13) A: I can't believe we were four hours late in arriving. Do you understand that I have missed my connecting flight and a very important meeting? What am I supposed to do now?
B: Yes, sir. _____ We can provide you with a voucher for a hotel stay and a promise to get you on the next available flight.
- a) Let me apologize again for this inconvenience.
 - b) I'd like your manager to say sorry when I talk to her.
 - c) Luckily you will be able to make it to the meeting on time.
 - d) I'll call ahead to check that the flight is on schedule.
- (14) A: I'm looking for a budget hotel where I can get on the Internet, so I can access my e-mail and update my blog. I need something convenient to the train station and I'm by myself, so I want something safe, too.
B: Well, there are two hotels that should meet your needs. They are both reasonably priced. They are both located near the main railway station. And they both _____.
- a) feature free Wi-Fi in every room
 - b) are a 30-minute taxi ride from the station
 - c) can accommodate large groups of travelers
 - d) expire in a day if you don't use them

- (15) A : I don't see any prices for the cocktails in the menu. Could you tell me how much they are?
B : _____ Just let the bartender or server know what you'd like and they'll give it to you, as much as you like. You don't need to pay or show your room key.
- a) All alcoholic drinks are prohibited in the hotel.
 - b) All beverages are complimentary for guests at the resort.
 - c) Everyone gets free meal vouchers for their stay.
 - d) Use your key card to open the lockers in the recreation area.

[Part B] Read the following English conversations from (16) to (20) and choose the most appropriate utterance to complete each conversation from among the four alternatives: a), b), c) and d). Blacken the letter of your answer on the answer sheet.

(16) A: Would it be possible to get some substitutions for this evening's meal? According to the menu information I just got, the main dish contains shrimp, which isn't OK for one of the members of my group.

B: We don't usually allow substitutions for group meals. What exactly is the problem?

A: _____ He gets a very bad rash if he eats it.

- a) The size of the portion is a problem.
- b) He doesn't care for any type of vegetable.
- c) His belongings were stolen from his room.
- d) He is allergic to shellfish.

(17) A: I'd like 4 tickets, please. We have two children, and four adults. But two of the adults are over 60 years of age.

B: Well, children are half price. And there is _____. So the total is 46 dollars.

A: Thanks. Here you are.

- a) a limit on the number of suitcases you can check in
- b) a 20% discount for seniors
- c) a rather long line for admission to the exhibition
- d) a policy regarding taking photographs in the building

(18) A: Excuse me, you're the group from ExtraSea Tours for the Whale Watching Experience, aren't you? I was told you have 16 people. Are you all here?

B: Yes, but we are a party of 19 now, including me. I sent the update by e-mail three days ago.

A: That should be no problem. _____

- a) The boat has a capacity of 30.
- b) Your order is ready to be served.
- c) The flight has safely departed already.
- d) We can start fishing when the others arrive.

- (19) A: Have you ever been to the Smithsonian in Washington? I'm going to Washington next month and I'm trying to decide if I should visit.
- B: Yes. I went there two years ago and spent two days at the Smithsonian. It's great if you have lots of time. _____
- A: I guess I'll need the whole day to see it.
- a) It's tiny compared to other museums in the world.
 - b) It's a vast collection of museums and galleries.
 - c) But I didn't have time to see anything.
 - d) The beaches, especially, are worth visiting.
- (20) A: I would love to see that festival in Japan where they have a huge Chinese character burning on a mountain.
- B: I think you mean the *Daimonji*. Actually there are several around Japan. The most famous is probably in Kyoto. But they _____.
- A: Too bad. Next time I'll try to come in that season.
- a) are now prohibited from using flammable materials
 - b) are held in the summer as part of the O-bon festival
 - c) take place every weekend throughout the year
 - d) can be purchased as souvenirs for friends and family

3

Read the following English paragraphs which contain incomplete sentences. To complete the sentence, put each set of words into the best order. When you have finished, blacken the letter on your answer sheet for the word in the position of the blank that has the question number.

Europe is the most _____ (21) _____ the world. Six of the top ten destinations in the world—France, Spain, Italy, the United Kingdom of Great Britain, Turkey, and Germany—are located in Europe. Many of the tourists who visit European countries _____ (22) _____ like North America, Japan, or increasingly, China. Europe is expensive and difficult to travel to. Why are European countries so popular? Well, many people visit European countries to see old things: old _____ (23) _____ or castles, old museums with old paintings or artifacts, or old monuments. One writer, who recently wrote a book about travel and history, says that people don't visit these places because they are interested in old things especially. In their own countries, many of these people rarely go to museums or visit old buildings. He says it is very strange that people travel around the world and line up to visit museums, churches, or monuments.

But why do they feel they should do this on their vacation? Westminster Abbey in London, the Louvre in Paris, or the Colosseum in Rome are among the most popular places in the world to visit. Why are they so popular? The answer lies partly in the history of travel. Many years ago, _____ (24) _____. Only very rich people could travel to another country just to experience going to another place. These people usually studied Roman and Greek history and literature, and Latin, the language of old Rome, as part of their education. So they were very interested in Roman history. That _____ (25) _____ Italy, especially Rome became so popular and famous. The earliest travel guidebooks were written for these early travelers. As more and more people began to have the money and time to travel, they continued to use the same guidebooks. As they did, the culture of travel was developed.

- (21) a) destination b) in c) popular d) tourism
- (22) a) faraway b) places c) from d) come
- (23) a) as b) such c) cathedrals d) buildings
- (24) a) people b) could c) travel d) few
- (25) a) why b) reason c) one d) is

Go on to the next page

4

[Part A] Read the following information sheet and answer the questions from (26) to (30) by choosing the most appropriate answer for each question from among the four alternatives: a), b), c) and d). Blacken the letter of your answer on the answer sheet.

Adelaide Sightseeing

Adelaide-in-a-Day

Enjoy a fun-filled day visiting Adelaide's main attractions including important historical spots, fashionable shopping centers, city parks home to a wide variety of plants and wildlife, and other exciting

① in South Australia's dynamic capital city.

Known as the "20 Minute City," Adelaide's most famous tourist sites are all located less than 30 minutes from the city center and major hotels. Tour participants can take in many of Adelaide's highlights but in a relaxed manner, free from the usual rush along the tourist trail like in other cities.

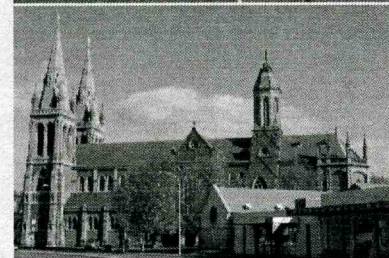
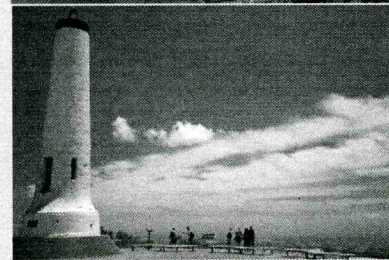
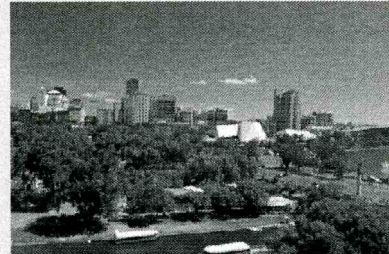
This all-inclusive tour includes all entrance charges at venues such as Adelaide Zoo, lunch and fully guided transport. Prices start at A\$100 per adult, half-price for children under 10. Please see the full price list and special offers on our website.

To join the tour, please sign up on our website. First, select the date and departure time that best suits your schedule. Then choose a designated pick-up point to board one of our comfortable tour coaches. Finally enter your name and use your credit card to place a deposit for the tour using our safe and secure payment section.

We hope you enjoy your Adelaide-in-a-Day with us!

Important Details:

- (1) All itineraries include: Mt. Lofty Lookout, Glenelg Esplanade, St. Peter's Cathedral, Adelaide Zoo, Rundle Street.
- (2) Please form a queue behind the Tourism Adelaide signs at each pick-up point. Pre-reservations are required for all participants.
- (3) Please note the Giant Pandas cannot be viewed on Sunday.
- (4) Visits to the National Wine Centre are optional and by advanced reservation only. All participants on this tour must be 18 years or older. Tours take place daily from 2 PM.
- (5) Optional Tours include: University of Adelaide, Colonel Light's Lookout, Haigh's Chocolate Factory, South Australian Museum. Advanced reservations required.



- (26) Choose the most appropriate phrase for ①.
- a) tourist traps
 - b) places of interest
 - c) tourism information centers
 - d) places for information
- (27) Adelaide-in-a-Day _____.
- a) is only for nature lovers
 - b) is best for people who love shopping
 - c) is very expensive
 - d) is for participants who reserve online
- (28) Adelaide is _____.
- a) the capital of Australia
 - b) difficult to travel around
 - c) South Australia's capital city
 - d) very expensive to live in
- (29) Which statement is CORRECT?
- a) Adelaide is a convenient city to get around.
 - b) Adelaide can be very cold in the winter.
 - c) The city is Australia's largest.
 - d) The area does not have any wineries.
- (30) Which statement is FALSE?
- a) Adelaide-in-a-Day includes all entry fees and meals.
 - b) The tour can only be joined after making a reservation.
 - c) Visits to the National Wine Centre are not included in the regular schedule.
 - d) Adults are A\$100, children are A\$75.

[Part B] Read the following information sheet and answer the questions from (31) to (35) by choosing the most appropriate answer for each question from among the four alternatives: a), b), c) and d). Blacken the letter of your answer on the answer sheet.

Topic: Supporting Tohoku through Volunteer Tourism

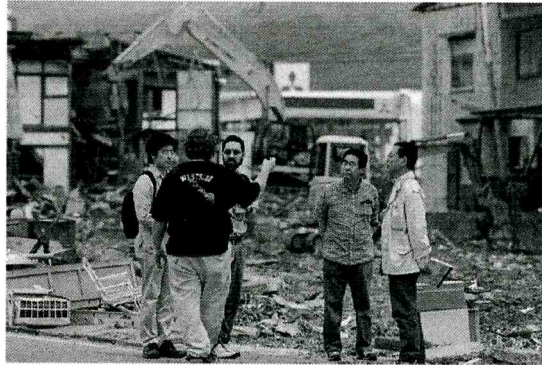


Photo: Tohoku Volunteers (<http://hands.org>)

Since the Great East Japan Earthquake there has been much interest from people around the world wishing to visit and volunteer in the affected regions of Japan. There are a number of organizations through which people can travel to Japan and volunteer from a few days up to several months of their time, including the following project.

Project Tohoku is **All Hands Volunteers'** tsunami response project in Ofunato and Rikuzentakata, Japan. Volunteers are required to apply and arrange for their own travel to and from the volunteer headquarters in Japan.

Current Activities

Volunteers are currently working on debris removal and home repairs so that families can return home. We are also involved in city projects, including the manual clearance of drainage canals to prevent flooding as we move into rainy season. This is dirty and physical work and volunteers may be outside for most of the day.

We work six days a week with each Tuesday off to allow more local people to join us on their weekends. Volunteers are free to travel and sightsee on their day off. Our minimum age to volunteer is 18 years old, unless accompanied by a parent/guardian.

Volunteer on Project Tohoku

We have successfully completed the third round of volunteer applicants. Due to limited space for volunteer members, we will only reopen applications if we extend or expand our project. Thank you for your interest and your support.

Volunteers Packing List

Local businesses in Tohoku are starting to reopen; but please come prepared with all the basics you will need during your volunteer time so that you can get right to work. Required items include:

- Single sleeping pad/air mattress.
- Sleeping bag or bedding (we DO NOT provide bedding).
- Sturdy footwear with puncture-proof soles.
- Rain boots and waterproof clothing.

- (31) According to the passage, what are volunteers currently doing in the Tohoku region?
- a) They are re-opening new businesses.
 - b) They are only sightseeing.
 - c) They are acting as tour directors.
 - d) They are helping to remove debris.
- (32) What is the minimum age for a volunteer without a parent?
- a) 18 years old.
 - b) Any age is okay.
 - c) At least 20 years old.
 - d) Only parents can volunteer.
- (33) Which of the items is not listed as required?
- a) Single sleeping pad.
 - b) Bedding.
 - c) Rain boots and water proof clothing.
 - d) Running shoes.
- (34) How many days a week do volunteers work?
- a) At least seven days a week.
 - b) Volunteers must work outside most of the days.
 - c) Volunteers work six days a week.
 - d) The work day is long.
- (35) When can you apply to volunteer for Project Tohoku?
- a) Applications for volunteers are currently closed.
 - b) Applicants should send an e-mail.
 - c) Three rounds of volunteers will begin soon.
 - d) Applications should be submitted before rainy season.

[Part C] Read the following information sheet and English conversation, and answer the questions from (36) to (40) by choosing the most appropriate answer for each question from among the four alternatives: a), b), c) and d). Blacken the letter of your answer on the answer sheet.

Featherbed Railroad Bed & Breakfast Resort

Unique Bed and Breakfast in Lake County on Clear Lake in Northern California

Room & Info
Reserve
Weddings & Events
Things To Do
Recipes
Videos
Blog
Contact

The Featherbed Railroad Bed and Breakfast Resort is Northern California's most unique rural bed and breakfast. We are located on the shore of Clear Lake in Northern California's Lake County. At the Featherbed Railroad, you get to stay in one of the nine luxuriously theme-decorated antique railroad cars in a park-like setting overlooking the lake.

Our award-winning resort has been featured in travel articles several times as a unique B&B. Each of our rooms is in a renovated train car! Our breakfasts are big, delicious and famous. And we were chosen as the best place to stay if you want to stay in a place that has a ghost! So ghost hunters and everyone who just wants a relaxing stay make your plans to join us for a memorable stay.

Join us soon for a relaxing stay in a real antique retired railroad car where you relax in your own private Jacuzzi tub and sample some of the excellent local wine. With nature trails, fabulous water sports, bass fishing, great local antique stores, we offer something for everyone. And we're located in the Clear Lake area with its peaceful, uncrowded country roads and relaxed atmosphere. It's the perfect place to relax.

Show Availability Starting: 03/02/12 Guests: 2

| | Fri 3/2 | Sat 3/3 | Sun 3/4 | Mon 3/5 | Tue 3/6 | Wed 3/7 | Thu 3/8 | Fri 3/9 |
|------------------|---------|---------|---------|---------|---------|---------|---------|---------|
| La Loose Caboose | X | \$220 | \$220 | \$220 | \$220 | \$220 | \$220 | \$220 |
| Orient Express | X | X | X | \$220 | \$220 | \$220 | \$220 | X |
| Celebrations | X | X | X | \$190 | \$190 | \$190 | \$190 | X |
| Lovers | X | X | X | \$190 | \$190 | \$190 | \$190 | X |
| Easy Rider | X | X | X | \$190 | \$190 | \$190 | \$190 | X |

| Casablanca | X | X | X | \$190 | \$190 | \$190 | \$190 | X |
|----------------|---------|---------|---------|---------|---------|---------|---------|---------|
| Wine Country | X | X | X | \$190 | X | X | X | X |
| Wild Wild West | X | \$175 | \$175 | \$175 | \$175 | \$175 | \$175 | X |
| TropCaboose | X | X | \$150 | \$150 | \$150 | \$150 | X | X |
| | Fri 3/2 | Sat 3/3 | Sun 3/4 | Mon 3/5 | Tue 3/6 | Wed 3/7 | Thu 3/8 | Fri 3/9 |

A: I'm just about to make the reservation for our weekend getaway. I've chosen this place up in Lake County.

B: Is it small and quiet? We talked about going someplace quiet and relaxing.

A: It should be. It has only (36) rooms. Each one is in an old train car.

B: Really. That's (37).

A: That's why I chose it. Also, they are famous for (38). They put the recipes on their site along with the delicious-looking pictures. You can take a look if you like. But I know you'll like it.

B: What else can we do there?

A: Not much at the resort. We can enjoy the nature, like the trees and the lake, or relax in the Jacuzzi.

B: Sounds perfect.

A: Here are the rooms I thought would be nicest to reserve.

B: Well, it looks like only (39) is available on the 9th. So I guess that's the one we should reserve.

A: Oh, you're right. But there's one more thing I need to tell you.

B: What's that?

A: Well, one of the rooms is (40). I found this B&B in an article about B&Bs that have ghosts. I thought it could be fun.

B: Umm...I'm not so sure...

(36) Choose the most appropriate number for (36).

- | | |
|------|-------|
| a) 4 | b) 7 |
| c) 9 | d) 12 |

(37) Choose the most appropriate word for (37).

- | | |
|--------------|-----------|
| a) dangerous | b) huge |
| c) casual | d) unique |

(38) Choose the most appropriate word or phrase for (38).

- | | |
|---------------------|------------------|
| a) their shuttle | b) breakfasts |
| c) mountain scenery | d) entertainment |

(39) Choose the most appropriate word or phrase for (39).

- | | |
|--------------------|-------------------|
| a) LaLoose Caboose | b) Orient Express |
| c) Celebrations | d) Lovers |

(40) Choose the most appropriate word for (40).

- | | |
|----------------|-------------|
| a) haunted | b) delicate |
| c) continental | d) spacious |

5

[Part A] Read the following descriptions from (41) to (45) and choose the best answer to complete the sentences with blank parts from among the four alternatives: a), b), c) and d). Blacken the letter of your answer on the answer sheet.

- (41) As the political situation improves, _____, or Burma, can expect more visitors. This Southeast Asian country is bordered by India, Bangladesh, China, Laos and Thailand. The fantastic Bagan with its 4,000 temples or the old capital of Mandalay are places sure to become more popular in the future.
- a) Indonesia
b) The Philippines
c) Mongolia
d) Myanmar
- (42) Located in the middle of Europe, _____ has towering mountains, and glimmering lakes. Visit any one of the many mountain resorts for skiing in the winter or hiking or strolling in other seasons. See the modern art and contemporary buildings of Bern, beautiful historic Lucerne, and sample the cultures of its Italian, German, or French-speaking areas.
- a) Finland
b) Croatia
c) Switzerland
d) Austria
- (43) _____ is one of the world's three great waterfalls. It is located on the border of Brazil, Paraguay and Argentina and is a collection of waterfalls rather than a single one. The most famous part is the 700-meter long Devil's Throat, where in certain seasons thousands of tons of water crash down and send clouds of mist into the sky.
- a) The Grand Canyon
b) Iguazu Falls
c) Niagara Falls
d) The Amazon delta
- (44) There are many famous sites that are both beautiful but also important for spiritual or religious reasons. These _____ sites include places such as Mount Parnassus in Greece, Uluru (also known as Ayers Rock) in Australia, and the Ise Grand Shrine. Visitors should be careful to be respectful when visiting these places.
- a) sacred
b) tiny
c) awful
d) thatched
- (45) In 2011, several airlines began to offer a new service to let passengers know the _____ of their luggage—if the bags are on the plane or where they are if they are "lost." The service provides you with a number for your bag and you can track the location of your bag in real time via your smartphone or computer.
- a) status
b) option
c) security
d) packing



2級 リスニング試験

**リスニング試験開始の合図が
あるまで開いてはいけません。**

2級リスニング

- 6 Listen to the four descriptions for each picture from (51) to (55). Choose the statement that best describes what you see in the picture from among the four alternatives: a), b), c) and d). Blacken the letter of your answer on the answer sheet. The descriptions will be spoken just once.

(51)



(52)



(53)



(54)



(55)



7

Listen to the four descriptions for each illustration from (56) to (60). Choose the statement that best describes what you see in the illustration from among the four alternatives: a), b), c) and d). Blacken the letter of your answer on the answer sheet. The descriptions will be spoken just once.

(56)

Experience Alcatraz

Save Time
Avoid the Lines
Buy 'Print at
Home e-Ticket'




SAN FRANCISCO'S
#1 ATTRACTION

www.alcatrazcrusies.com
or
415-981-7625

Departing from Pier 33, Alcatraz Landing, San Francisco, CA

(57)

Grand Hotel



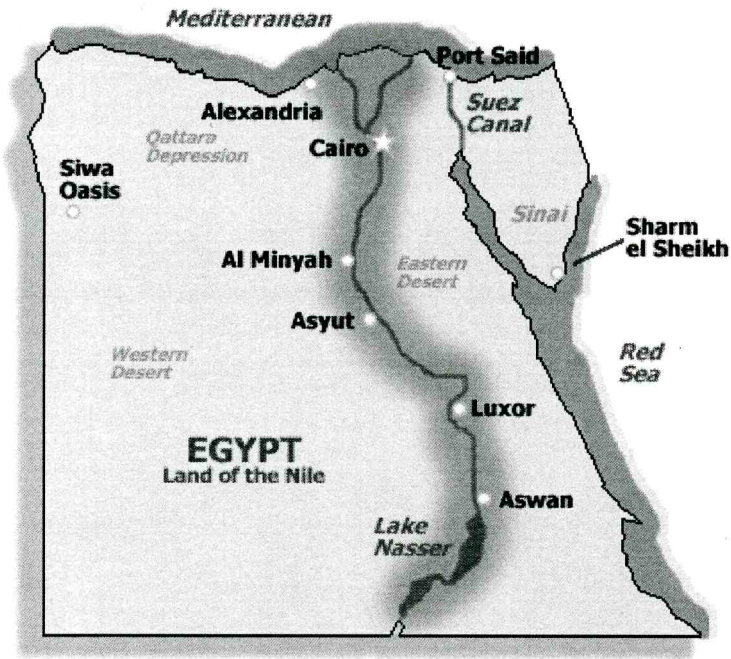
Date 12/26/11
Time 16:16
Clerk OPSINDY Guest Message

Room No. 902 Name Ms.Watanabe

Dear Ms.Watanabe
"Please meet at 17:00 at the bus stop in front of the hotel"
From Ms.Jian
Tel:919-204-800

Thank you for staying with us
Telecommunication

(58)






(59)

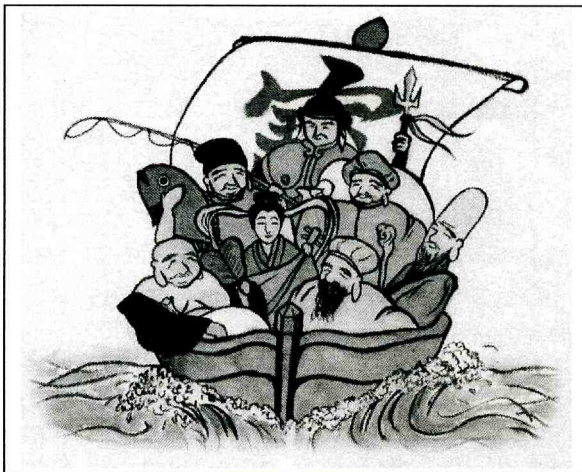
Access to city area



Shin-Chitose Airport

| JR Airport Express | | | |
|---|--------|-------|------------------|
| | Fare | Time | |
|  | ¥1,040 | 36min | Sapporo Station |
|  | ¥1,740 | 72min | Otaru Station |
| Limousine Bus | | | |
|  | ¥1,000 | 70min | Downtown Sapporo |

(60)



8

Listen to the first sentences from (61) to (70) and complete each dialog by choosing the best response from among the four alternatives: a), b), c) and d). Blacken the letter of your answer on the answer sheet. The sentences will be spoken twice.

- (61) a) I'm sorry, sir. Please fill in this declaration form.
b) I'm sorry, sir. We'll send someone from maintenance right away.
c) I'm sorry, sir. Would you like to change your reservation?
d) I'm sorry, sir. Would you please check the thermostat?
- (62) a) Certainly. Please fill in this lost item form.
b) Certainly. Where did you find it?
c) Yes, the taxi stand is out the lobby doors.
d) Thank you, but a tip is not necessary.
- (63) a) The burritos are very popular.
b) The pizza is delicious.
c) Pasta of the day.
d) Tom yum goong is spicy.
- (64) a) Yes, it's included in the guest welcome package.
b) No cables are required.
c) You need a personal computer.
d) No additional fee is required.
- (65) a) It's after business hours, could you try again tomorrow?
b) Unfortunately, we do not honor discount coupons here.
c) Discount coupons are an attractive offer for hotel guests.
d) Hotels.com is a popular way to find and reserve hotels online.
- (66) a) Trams leave every fifteen minutes from Central Street.
b) There is an express bus stop near the station.
c) The subway runs the length of the city.
d) Public transportation is a convenient and cheap way to get around.
- (67) a) It certainly is a popular sport these days.
b) I think you can get them on the StubHub website.
c) You can purchase team souvenirs like scarves and jerseys at Sports Mart.
d) There is a money exchange across the street.

- (68) a) From the pictures, it does look very beautiful.
b) The Inland Sea has a number of islands.
c) The view from there of Mt. Ishizuchi is famous as well.
d) It's located in Aichi Prefecture.
- (69) a) Yes, my father often uses the member's only lounge at Narita.
b) Yes, however I heard mileage programs are expensive to join.
c) Only low-cost carriers offer mileage programs.
d) The new airline offers a welcome drink to all passengers.
- (70) a) No, it's an indoor tour.
b) It often rains in June.
c) I'll bring lunch as well.
d) The tour departure is very early.

9

Listen to the conversations from (71) to (80) and choose the most appropriate answer for the question following each conversation from among the four alternatives: a), b), c) and d). Blacken the letter of your answer on the answer sheet. The conversations and the questions will be spoken twice.

- (71) a) Pay an additional fee for overweight luggage.
b) Use the self-check-in terminal.
c) Repack her bags.
d) Remove all metal items before proceeding.
- (72) a) He doesn't like the local food.
b) Safety of his valuables.
c) A place to stay.
d) The cost.
- (73) a) The clam-shell phone is cheap.
b) The customer requires a variety of features.
c) The customer is in a hurry.
d) The price was right.
- (74) a) He will leave on a business trip today.
b) His co-worker is in Shanghai.
c) He is also excited to visit the theme park.
d) He was late for work.
- (75) a) A walking tour.
b) Visiting the Misthouse.
c) The cactus garden.
d) Grooming the gardens.
- (76) a) At a train station.
b) At a supermarket.
c) At airport security.
d) At customs.
- (77) a) She wants to go diving.
b) She wants to enjoy local cuisine.
c) She wants to take it easy.
d) She wants to go an island resort.

- (78) a) Cloudy.
b) Snow.
c) Rain.
d) Sunny.
- (79) a) Cross the street.
b) Go back to his hotel.
c) Buy a ticket.
d) Take a taxi.
- (80) a) A tourist information counter clerk.
b) A pilot.
c) A concierge.
d) A check-in counter clerk.

10 Listen to the following conversation [Part A], and passage [Part B], and answer the questions from (81) to (90). Choose the most appropriate answer for each question from among the four alternatives: a), b), c) and d). Blacken the letter of your answer on the answer sheet. The conversation, the passage and the questions will be spoken twice.

[Part A]

- (81) a) A week.
b) Six days.
c) Five days.
d) Four days.
- (82) a) She wants to buy souvenirs at the hotel.
b) She wants to buy souvenirs at the airport.
c) She wants to buy souvenirs on the way to the airport.
d) She wants to buy souvenirs online.
- (83) a) 100
b) 1,000
c) 10,000
d) 100,000
- (84) a) NZ\$17.00
b) NZ\$70.00
c) NZ\$117.00
d) NZ\$170.00
- (85) a) There is not enough time.
b) They don't have a credit card.
c) The prices are not so good.
d) The store is closed at the moment.

[Part B]

- (86) a) Public transport.
b) Luxury accommodations.
c) New dining options.
d) Two ways to travel.
- (87) a) It's speed.
b) It's color scheme.
c) It's new class of seats.
d) It's shortened travel time.
- (88) a) The cost is double that of flying.
b) They recline more and are made of leather.
c) They are much more expensive than regular seats.
d) The price hasn't been announced yet.
- (89) a) In March 2011.
b) In April 2011.
c) In September 2011.
d) In October 2011.
- (90) a) The seats are larger.
b) It is easy to get tickets.
c) It is quieter and not so dry.
d) It has more engines.